

# **Xtrea**

**Always safe**



**and protected!**



**Flexible system**  
**Wire & Wireless**



**AUS electronics**

**ITALIAN SECURITY MANUFACTURER**

# XTREAM, when the flexibility increases the strength!

XTREAM never leaves us alone. While we are on holidays or we are spending time with our friends, XTREAM informs us with its voice about what is going on: an intrusion, a water leaking, mains absence. Furthermore, to check the system in remote way by using mobile phone, to check climate, gardens lights, sun curtains, home automation applications, to manage these and many other information and controls, XTREAM is simple and intuitive thanks to the vocal guide ASSC (Advanced Speech Synthesis Communication) developed by AVS Electronics.



## The control at first sight.



XTREAM allows to keep under control any department of the company. The integration of the Xstream system to Ethernet via the modules XWEB and the power software of graphic maps ELM, offers the possibility of monitoring the protected areas, to identify the alarm and to interact with the system. If used in addition to a video-control system in TCP-IP, ELM also visualizes the images. In local or in remote way, everything is under control.

## Even remotely, all areas are secured.

XTREAM is the system allowing to check big size sites such as shopping centres, residences, office buildings etc. The management of up to 64 areas, the big flexibility of system development through configuration of 640 zones, the possibility of integrating XTREAM with other Building Automation systems as well as the remote management of any single area, make the XTREAM system the only one capable to meet the different installation needs.





XTREAM is the range of microprocessor control panels, from 6 to 640 zones, with digital telephone dialler and pre-disposition to connection of the GSM interface and vocal synthesis (integrated in the model XTREAM 640 and optional in the models XTREAM 64-32-6), technologically advanced, in conformity with the most severe International Norms. The XTREAM range is ideal for civil small and medium-size systems but the control panels can also be installed in industrial sites or shopping centres. XTREAM is easy to program and simple to use. Powerful, smart and reliable at any moment of the day, the XTREAM control panels are studied in respect of the environment, which certifies 30% reduction on consumptions and a reduced use of rough materials.



XTREAM 640  
XTREAM 64 B  
XTREAM 32 B  
XTREAM 6 B



**xtream**

XTREAM 32 - 6

## USER INTERFACES

### **ice** TOUCH SCREEN KEYPAD

With ICE everything is simple and easy thanks to the help in line. ICE uses NFC technology and integrated proximity reader. With ICE you visualize the temperature of the your environments with the Touch Screen display 4,3" with photo frame functions.

### **A 600 EVO - A 600 EVO Plus** MULTIFUNCTIONAL LCD KEYPAD

Elegant keypad with large display and lateral leds.

**A 600 EVO Plus** integrates audio output allowing real time vocal warning of any event programmed, a touch proximity key reader and volume control, illumination setting.

### **A 500 - A 500 Plus - A 500 Carbon** SMART LCD KEYPAD

Compact keypad with elegant blue display, 32 characters LCD display + 7 system status LEDS. Integrated voice guide and NFC technology. Interchangeable covers. Available also with cover CARBON LOOK.

### **A 300** COMPACT LCD KEYPAD

Small keypad, partially recessed in type 503 junction box.



**NFC**



**TOUCH KEYPAD**

**ICE**  
**NFC**

**NEW**  
**A 600 EVO**  
**A 600 EVO Plus**

**EVOLVED LCD KEYPAD**

**A 300**

**COMPACT LCD KEYPAD**

**A 500**  
**A 500 Carbon**  
**A 500 Plus**  
**NFC**

**SMART LCD KEYPAD**

**MY AVS ALARM**

APP for  
IOS and ANDROID

XGATE modules allow the integration with home automation systems and building automation with protocol EIB / KNX® and MODBUS ®

**XGATE**

**EWEB Plus**  
**EWEB Video**  
**EWEB WiFi Video**

**NEW**

**VIDEO eweb** **WiFi eweb**

The EWEB network cards allow to connect the own XTREAM to the internet, to manage the plant via browser, GATEWAY TCP-IP send e-mail, do remote assistance, check from the MY AVS ALARM APP. The IP card is also available in the WIFI model.

**PROXIMITY SERIAL READER**

**TOUCH - RS**

**NFC AND PROXIMITY TAG**

**TOY L - TOY LN**

**BIDIRECTIONAL REMOTE CONTROL**

**BIP 4 Plus**

**GSM COMMUNICATOR**

**NEW**  
**XGSM 485**  
**XGSM 485 4G**  
**XGSM485 PRO**  
**XGSM485 PRO 4G**

The PSTN telephone dialler, is integrated on control panel.

**Telephone communicator**

**XTREAM 640**  
**XTREAM 64 B**  
**XTREAM 32 B**  
**XTREAM 6 B**

**XTREAM 64**

**Users interface**

**Software and system integration**

**ELM-IT**

**SOFTWARE AND INTERACTIVE GRAPHIC MAPS**

**XWIN**

**PROGRAMMING SOFTWARE**

## USERS INTERFACE

### BIP 4 Plus

#### BIDIRECTIONAL REMOTE CONTROL

The keyholder remote control, simple and versatile, can operate arming and disarming emergency calls and O.C. outputs. It features 8 easily-programmable commands in order to be "customized" thanks to rolling-code transmission, according to the user needs.

**BIP Plus**



### TOY L - TOY LN

#### NFC AND PROXIMITY TAG

Key ring proximity tag, realized in metal and leather. NFC technology. Compatibility with ICE and A500 PLUS Keypads.

**NFC**



### RS - TOUCH

#### PROXIMITY KEY

For a quick arming, disarming and access control of control panel



### XEXP 8

#### ZONES EXTENSION

From 8 to 16 INPUTS



### XSAT 2 - XSAT 8

#### EXTENSION MODULES

FOR SINGLE OR DOUBLE BALANCED ZONES

From 2 to 20 INPUTS  
From 8 to 16 OUTPUTS



ZONES  
EXTENSION  
MODULE



**XEXP 8**

BOARD FOR  
PERIPHERAL  
EXTENSION  
IN RS485



**XSAT HP  
XSATHP MINI**

ZONE  
EXTENSION  
AND  
ADDRESSING  
MODULE



**XSAT MINI**

EXTENSION  
MODULES FOR  
SINGLE OR  
DOUBLE  
BALANCED  
ZONES



**XSAT 2  
XSAT 8**

SUPPLY UNIT WITH  
INTEGRATED ZONES/  
OUTPUTS EXTENSION  
BOARD



**XSAT PW3  
XSAT PW5**

BOARDS FOR ZO-  
NESEXTENSION  
AND OUTPUTS



**XSAT36**

**AMPLIBUS**



ISOLATOR AND  
AMPLIFIER OF  
SERIAL LINE

## System extension

**POWER 3Q  
POWER 5Q**



ADDITIONAL  
SUPPLY UNITS



XTREAM 32 - 6



**XSAT WS4**



BIDIRECTIONAL  
RADIO  
EXTENSION  
MODULE

## Serial sirens

**CITY HP  
TS 85 HP**



LED SIRENS ON  
BUS RS485



**OutSpider PA**  
Digital double PIR  
detector

**OutSpider DT**  
Double PIR and  
double digital  
microwave channel  
detector

## Serial detectors



**BM 60-120-200 HP**  
Digital outdoor microwa-  
ve barrier 60-120-200  
meters range



**NEW**

**ONE HP**  
Outdoor dual  
technology  
detector with  
RS485 bus



**JET HP**  
Digital dual  
technology  
detector with  
RS485 bus

**RS485  
Connection**

**XSAT 36**  
BOARDS FOR ZONES  
EXTENSION AND  
OUTPUTS  
From 10 to 36 INPUTS  
8 OUTPUTS



**XSAT PW3 (Q)  
XSAT PW5 (Q)**  
SUPPLY UNIT WITH  
INTEGRATED ZONES  
OUTPUTS EXTENSION  
BOARD

Available also in metal  
box version.



## DIGITAL EXTENSION

**XSAT HP  
XSATHP MINI**  
BOARD FOR PERIPHERAL  
EXTENSION IN RS485  
Available also in small model  
XSATHP MINI.



## EXTENSION GSM TELEPHONE

**XGSM - XGSM 4G**  
GSM TELEPHONE  
DIALLER - PLUG-IN  
Communications  
protocols: vocal,  
digital, TCP-IP. Sending  
and receiving of SMS  
messages. Mobile APP  
Management with MY  
AVS ALARM.



## EXTENSION TEL. GSM DUAL SIM

**XGSM 485  
XGSM 485 4G  
XGSM 485 PRO  
XGSM 485 PRO 4G**  
RS485 GSM TELEPHONE DIALLER

Communications protocols: voice and  
SMS messages.  
Sending and  
receiving of SMS  
messages.  
Connection:  
RS485 serial.  
Mobile APP  
Management  
with MY AVS ALARM.





## RS 485 DIGITAL DEVICES

### XSAT HP

#### XSAT HP MINI

##### DIGITAL EXPANSION

XSAT HP MINI is a small-dimensions RS485 hub used to connect RS485 sensors (Outspider, ONE HP, BM HP, JET HP) up to a maximum of 32 devices. The large version - XSAT HP - manages: 3 or 5 Amp additional supervised power supply, 2 RS485 buses of sensors, remote reprogramming by built-in PSTN phone line and optional GSM.



### BUS OUTDOOR SIRENS

#### TS85 LED HP

##### RS485 SIRENS

Directly connected to the CAPTURE RS485 bus, the LED HP siren series allow the built-in management of both visual and acoustic information. Adjustable sound volume, 8 different alarm tonalities for 2 different events, one main alarm LED and 2 extra information LEDs. Accelerometer sensor for tamper, vibration and choc. Exists in 100% painted-steel housing / 100% stainless steel housing / polycarbonate housing (numerous colors available) with second inner cover in painted-steel. Programmable from keypad or by computer (also remotely).

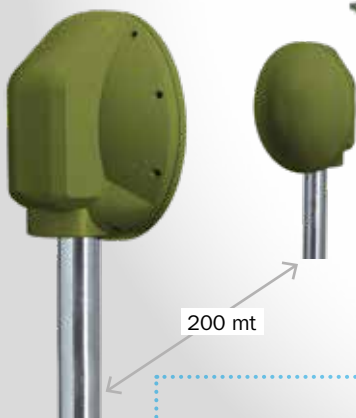


Available in different models and colours

### BM 60-120-200 HP

#### DIGITAL MICROWAVE BARRIER

Digital microwave barrier to create perimeter protection of few 100 meters up to more kilometers. Automatic Gain Compensation, noise reduction technology, false alarms filter. Also programmable by software locally or remotely. Can be directly connected by RS485 to CAPTURE or through XSAT HP/MINI. Available also in 220AC (BM HP VAC). Detection range: 60/120/200 m.



### JET DT HP PLUS

#### DUALTECH INDOOR DIGITAL DETECTOR

Microwave planar antenna with Fresnel lens passive Infrared sensor, programmable in AND/OR/SECURITY mode. Presents a look down lens to detect also vertically below the sensor. Pet immunity programmable up to 24 kg. An active IR circuit protects it from any masking attempt. The accelerometer unit detects the tamper actions. Alarm database with date/time/temperature/signal curves.

Also programmable by software remotely. Can be directly connected by RS485 to CAPTURE or through XSAT HP/MINI. Detection range: 15 meters  
Opening angle: 90°  
mounting height: 2.2 meters



### OUTSPIDER PA HP

#### DIGITAL OUTDOOR DOUBLE PASSIVE DETECTOR

Digital double IR outdoor sensor. High pet immunity, anti-masking by active IR. Also programmable by software locally (need USB-OUT cable) or remotely. Can be directly connected by RS485 to CAPTURE or through XSAT HP/MINI. Detection range: 15 to 23 m. Opening angle: 5° to 90°  
Mounting height: 2.0/2.7 m.



### OUTSPIDER DT HP

#### DIGITAL OUTDOOR MULTI-CHANNEL DETECTOR

Digital double IR and dual microwave outdoor sensor. The Doppler effect created by the double microwave antenna reduces drastically the false alarms from the vegetation environment and cancel all solar troubles. High pet immunity, anti-masking by active IR. Also programmable by software locally (need USB-OUT cable) or remotely. Can be directly connected by RS485 to CAPTURE or through XSAT HP/MINI. Detection range: 15 to 23 m. Opening angle: 5° to 90°  
Mounting height: 2.0/2.7 m.



### ONE DT HP

#### DOUBLE TECH OUTDOOR CURTAIN DETECTOR

**NEW**

Dual technology curtain digital outdoor sensor with Fresnel lens. Completed with double antimasking solution, accelerometer for tamper detection, pet immune. Also programmable by software remotely. Can be directly connected by RS485 to CAPTURE or through XSAT HP/MINI. Detection range: 12 m. Opening angle: 5°  
Mounting height: 2.2 m.



### ONE PA HP

#### PASSIVE IR OUTDOOR CURTAIN DETECTOR

**NEW**

Fresnel lens passive IR curtain digital outdoor sensor. Completed with IR antimasking solution, accelerometer for tamper detection, pet immune. Also programmable by software remotely. Can be directly connected by RS485 to CAPTURE or through XSAT HP/MINI. Detection range: 8 m  
Opening angle: 5°  
Mounting height: 2.2 m.







## BIDIRECTIONAL WIRELESS DEVICES

**CITY WS 4**  
LED OUTDOOR  
SIREN  
Available in carbon  
look version **(C)**



**GHOST WS 4PLUS**  
BIDIRECTIONAL  
WIRELESS  
TRANSMITTER FOR  
DOORS AND  
WINDOWS  
With two-channels  
magnetic contact and  
inertial detector



**WIC 4 PLUS - WIC 4 MINI PLUS**  
WIRELESS MAGNETIC CONTACT  
DOUBLE CHANNEL WITH  
INERTIAL  
Available also without the  
inertial **WIC 4 - WIC 4 MINI**  
and in brown color **(B)**



**JET 360 WS**  
INDOOR CEILING  
MOUNTING PIR



**SD4 WS**  
INDOOR OPTICAL SMOKE  
DETECTOR WIRELESS



**JET DT WS 4**  
INDOOR DOUBLE  
VOLUMETRIC  
TECHNOLOGY DETECTOR  
Available also in PIR  
**JET PA WS 4**



**\* RPT WS 4**  
BI-DIRECTIONAL  
WIRELESS REPEATER



**BIP 4 PLUS**  
BIDIRECTIONAL  
REMOTE CONTROL  
Available also in  
the mono directional  
version  
**BIP 4**  
and in Carbon Look  
**(C)**



**A500 WS 4**  
BI-DIRECTIONAL LCD  
WIRELESS KEY PAD,  
white color



**A500 PLUS WS 4**  
BI-DIRECTIONAL LCD WIRELESS  
KEYPAD, WITH ADVANCED FUNCTIONS,  
white color. Key pad available in  
**Carbon Look**. The AVS Cloud is able  
to keep you informed on what is  
happening to your control panel,  
sending real time notifications of  
alarm, failure, login on your mobile.

**SPECTRUM DT WS AM 4**  
DOUBLE TECHNOLOGY  
OUTDOOR DETECTOR  
Available in double side version WALL  
**SPECTRUM PA WS WALL 4** and  
**SPECTRUM PA WS WALL AM 4**



**OUTSPIDER DT WS 4**  
DOUBLE TECHNOLOGY  
OUTDOOR DETECTOR  
Available also in double PIR  
**OUTSPIDER PA WS 4**



**ONE PA WS 4**  
OUTDOOR CURTAIN  
DETECTOR



**WING 4 WS**  
INDOOR CURTAIN DETECTOR  
For the protection of windows and  
doors. Available also with the  
antimasking **WING 4 MWS**



**\* Product available soon**

# AVS CLOUD THE BEST CLOUD FOR YOUR SAFETY



Do you always want to control  
and program your home,  
from everywhere and at anytime?

**DOWNLOAD THE APP!**



The AVS Cloud allows a secure and reliable connection, constantly supervising Internet, sending real-time notifications of alarm, failure, login and inefficiency of the network on your mobile. The system works with encrypted protocols and the AVS servers are certified according to the ISO IEC 27001: 2013 standard, ensuring security at the highest levels.





## APP FOR END USER

App developed for the end user to control easily and intuitively your control panel, from everywhere and at any time you desire.

### PUSH-NOTIFICATIONS

The AVS Cloud is able to keep you informed on what is happening to your control panel, sending real time notifications of alarm, failure, login on your mobile.



### MULTISYSTEM MANAGEMENT

You can manage your control panel from everywhere and at any time. No limitations to the numbers of control panels to manage.



### EVENTS

In any moment, you can read the events memories of your control panel (up to 220 memories).



### AVS SERVER CLOUD

The AVS cloud allows a secure and reliable connection, constantly supervising the connection to Internet.



### SIMPLE COMMANDS

A smart and simple interface, allows you to intuitively access to all the programmed functions of the system.



### QUICK ACTION

Simple and quick management of the control panel with the simplifications of the accesses and the activation of quick commands. Your telephone can be becoming a remote control.



### SEMPLIFIED SCENARIOS

With only a click, you can manage many functionalities. With this function, it makes simpler also the most complex commands.



### VIDEO VERIFICATIONS

The APP permits the connection of video cameras IP ONVIF S - Mjpeg - RTSP for the video verifications in real time.



## SOFTWARE AND SYSTEM INTEGRATION

### XWIN

#### PROGRAMMING SOFTWARE XTREAM 640

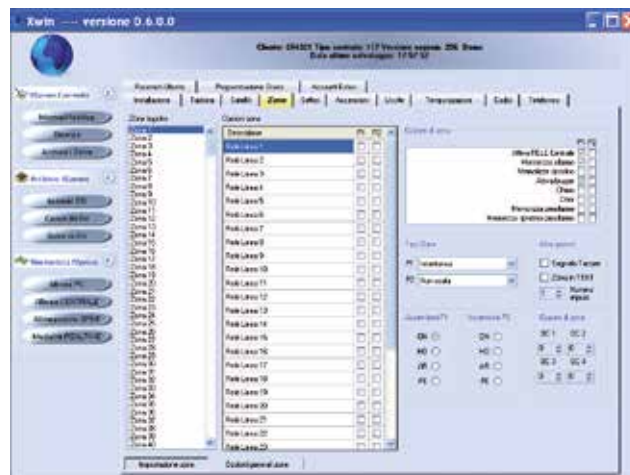
XWIN is the advanced software for full setting of Xstream control panel both in direct connection by use of USB cable and in remote way by use of an universal 56K modem or by use of GSM channel or by Cloud. XWIN allows updating of control panel firmware with direct connection to control panel via USB door. Software also gives possibility to visualize system status in real time, providing information on consumption of control panel as well as on the status of various detectors.

Furthermore, it is possible to have complete control of inputs and outputs status and it is also possible to intervene in local or remote way, arming/disarming the system.

All operations are subject to an enabled User code. The REAL TIME mode is the new dynamic up-down-loading of AVS allowing to monitor and manage any single system at 360°.

#### SYSTEM DATA

- Windows: XP SP2 @- VISTA @ Windows 7-8-10
- modem compatibility:
- modem standard V.90
- control panel compatibility: XTREAM



### ELM

#### SOFTWARE AND INTERACTIVE GRAPHIC MAPS MANAGEMENT OF IP VIDEO IMAGES

The ELM software, combined to XLINK, enables the display or the interactive management on PC of all information relative to the system status with the visualization of images (.wmf / .jpg) from video cameras connected in the TCP-IP network. The system will thus be always under control and we will also have constant information on activations and on the status of active outputs, with which it is possible to activate or deactivate the lights, irrigation, and other.

The system is completed by the integration of IP video cameras, enabling the acquisition of video footage. Also the possibility to active the different use licenses makes ELM a management instrument suitable for multiple use contexts.

#### SYSTEM REQUIREMENTS

Windows XP SP2 (Home or Professional) or Superior, Windows Vista SP1 @ or superior, Windows 7 @ , 1024 RAM - Celeron M or superior - 1 GB free on disk - color monitor at 16 bit with resolution 1024x768 or superior - Microsoft Internet Explorer 6.0@ or superior - Microsoft Outlook @ or other compatible mail MAPI management program.

#### LICENSE CONDITIONS

- The software is supplied by AVS Electronics in limited version. This version allows a connection to the system in a time lapse of maximum 2 - 3 minutes. The system remains connected in unlimited way if coupled to one of the two possible licenses.
- LIC-ELMXLB: Xstream system – limited to 640 zones bi-directional
- LIC-ELMXLV: Xstream system, limited to 640 zones – visualization and graphic maps only.



**NOTE:** all functions are available in addition to the evolved systems of AVS Electronics



### EWEB PLUS

#### EWEB PLUS LAN-ETHERNET NETWORK CARD AND WEB SERVER

The EWEB PLUS communication interface is for connecting Capture/Xstream control panels to the LAN network. The integrated Web Server is for managing the Capture/Xstream with a normal Internet Browser, and also offers for the user different functionalities like: - Checking system status in real time on graphical map - Arming and disarming the system and outputs ON-OFF. Checking the log of events, diagnostics and exclusion of zones - Sending alarm, ON-OFF

and fault alerts by e-mail - **Managing the MY AVS ALARM Mobile App - Connecting up to 4 users at the same time - Sending TCP-IP digital protocols with AES128 bit standard data encryption - Managing the AVS-XLINK protocol for integration with other systems FREE MY AVS ALARM APP for smartphone and tablet in the APP STORE and GOOGLE PLAY Premium version of MY AVS ALARM** - subscription service, information on the site [www.myavsalarm.com](http://www.myavsalarm.com) - Complete management of the Capture/ Xstream system using the AVS CLOUD Server, turning sectors

ON-OFF, management of scenarios, home automation controls, zone status control, diagnostics, reading of events log - Images captured live by the cameras connected to the TCP-IP network, compatible with ONVIF S@ or MJPEG@ - Receipt of Alarm, ON-OFF and system fault Push notifications - Display of climate data from compatible NETATMO@ devices - NOTE@: These are proprietary brands

**INSTALLER FUNCTIONS** - Programming and updating the firmware of the Capture/ Xstream control panels with XWIN software, via connection to a LAN/WLAN network or remote



broadband network - Dynamic DNS management - LAN port: RJ45, 10/100 Mbit/s - Compatibility: CAPTURE, XTREAM control panels, XWIN and ELM software - IMQ-INCERT EN 50131 Grade 2 CERTIFICATION



#### EWEB WIFI

#### WI-FI NETWORK CARD AND WEB SERVER

The EWEB Wi-Fi communication interface is for connecting the Capture/Xstream control panels to the available

Wi-Fi network - Same features and functions as the EWEB Plus model - Wi-Fi compatibility: 2.4 GHz 802.11 g/n

## XTREAM SYSTEM: CHART OF TECHNICAL CHARACTERISTICS

| TYPE OF ACCESSORY   | Num. MAX<br>on XTREAM<br>640           | Num. MAX<br>on XTREAM<br>64 - 32 - 6      | PRODUCT  | SUPPLYING   | CONSUMPTION   | SIZE mm   | BATTERY                                | WEIGHT gr                |
|---|--|---|--|---|---|---|--|--------------------------|
| <b>CONTROL PANEL<br/>IMQII Liv. EN-50131</b>                                |  |   | XTREAM 640<br>XTREAM 64/32/6 B                       | 220 V-13.8Vdc-3 .4A   | 1.3A/115V-0.8A/230V-  | 330 x 420 x 107   | Up to 18 Ah                            | 5200                     |
| <b>CONTROL PANEL</b>  |  |   | XTREAM 64<br>XTREAM 32<br>XTREAM 6                   | 220 V~13.8 Vdc~ 1.7 A<br>220 V~13.8 Vdc~ 1.7 A<br>220 V~13.8 Vdc~ 1.0 A | 0.7A/115V~ 0.4A/230V~<br>0.7A/115V~ 0.4A/230V~<br>0.35A/115V~ 0.25A/230V~ | 321 x 279 x 83<br>275 x 275 x 99.5<br>275 x 275 x 99.5                        | Up to 7 Ah<br>Up to 7 Ah<br>Up to 7 Ah |                          |
| <b>KEYPADS</b>  | N° 32                                  | N° 8                                      | A300<br>A300Plus<br>A600<br>A600 Plus                | 13.8 V<br>13.8 V<br>13.8 V<br>13.8 V                                    | 70 mA (Max)<br>70 mA (Max)<br>170 mA (Max)<br>170 mA (Max)                | 120 x 90 x 15 (20)<br>120 x 90 x 15 (20)<br>153 X 120 x 35<br>153 X 120 x 35  | -<br>-<br>-<br>-                       | 170<br>170<br>300<br>300 |
| <b>TOUCH KEYPAD</b>   |  |   | ICE  | 13.8 V  | 270 mA (Max)  | 130 x 92 x 16   | -                                      | 150                      |
| <b>EXTENSIONS ON<br/>CONTROL PANEL</b>                                      | N° 1                                   | N° 1                                      | XEXP8  | 13.8 V  | 5 mA (Max)  | 58 X 35 x 25  | -                                      | 25                       |
| <b>HARD-WIRED,<br/>WIRELESS SATELLITES</b>                                  | N° 32                                  | N°8 only<br>Xtream 64/32<br>N° 1 Xtream 6 | XSAT2<br>XSAT8<br>XSAT WS 4<br>XSAT36<br>XSATPW E    | 13.8 V<br>13.8 V<br>13.8 V<br>13.8 V<br>13.8 V                          | 32 mA (Max)<br>40 mA (Max)<br>72 mA<br>50 mA<br>60 mA                     | 81 x 53 x 24<br>81 x 53 x 24<br>100 x 110<br>152 x 119 x 24<br>152 x 119 x 24 | -<br>-<br>-<br>-<br>-                  | 45<br>45<br>125          |
| <b>SERIAL SATELLITE<br/>dedicated to peripherals<br/>connected in rs485</b> | N° 32                                  | N° 8<br>N° 1 Xtream 6                     | XSATPHP<br>XSAT HP MINI                              | 13.8 V  | 250 mA<br>50 mA   | 230 x 140 x 25<br>80 x 55 x 23  | -                                      |                          |
| <b>EXTENSION ON RS/485<br/>IN/OUT</b>                                       |  | N°8 solo<br>Xtream 64/32                  | XSATMINI   | 13.8 V  | 20 mA   | 40 x 25 x 13  | -                                      |                          |
| <b>PSTN TELEPHONE DIAL.</b>   | <b>INTEGRATED TO THE CONTROL PANEL</b> |   |  |   |   |   |  |                          |
| <b>GSM TELEPHONE<br/>DIALER (Optional)</b>                                  | N° 1                                   | N° 1                                      | XGSM<br>XGSM 485 4G / Plus                           | 13.8 V<br>13.8 V  | 400 mA (Max)<br>320 mA (Max)  | 93 x 15 x 60<br>121 x 75 x 23   | -                                      | 47                       |
| <b>VOCAL</b>  | INTEGRATED                             | N° 1                                      | XSINT  | 13.8 V  | 50 mA   | 73 x 55 x 20  |  |                          |
| <b>TRANSPONDER SERIAL<br/>READERS ON BUS</b>                                | N° 32                                  |   | RS1 ... 8  | 13.8 V  | 30 mA   | -   | -                                      | -                        |
| <b>KEY</b>  | N° 512                                 |   | TOUCH (B.G.O.Y.P)                                    | -   | -   | -   | -                                      | -                        |
| <b>REMOTE CONTROL</b>   | N° 512                                 |   | BIP 4  | 3 V   | 18 mA   | 77 x 43 x 15  | -                                      | -                        |
| <b>ADDITIONAL SUPPLY<br/>UNITS</b>  | N° 32                                  | N°8 solo<br>Xtream 64/32<br>N° 1 Xtream 6 | POWER 3Q<br>POWER 5Q                                 | 220 V~13.8 Vdc~ 3.4A<br>220 V~13.8 Vdc~ 5.1                             | 1.3A/115V~ 0.8A/230V~<br>2A/115V~ 1.2A/230V~                              | 330 x 420 x 107   | Up to 17 Ah                            | 5200<br>5500             |
| <b>SUPPLY UNITS WITH<br/>INPUTS EXTENSIONS</b>                              | N° 32                                  | N°8 solo<br>Xtream 64/32<br>N° 1 Xtream 6 | XSATPW 3Q<br>XSATPW 5Q                               | 220 V~13.8 Vdc~ 3.4A<br>220 V~13.8 Vdc~ 5.1                             | 1.3A/115V~ 0.8A/230V~<br>2A/115V~ 1.2A/230V~                              | 330 x 420 x 107   | Up to 17 Ah                            | 5200<br>5500             |
| <b>ACCESSORIES</b>  |  |   | XMR2<br>MR 4<br>MR 8                                 | 13.8 V<br>13.8 V<br>13.8 V  | 23 mA<br>from 10 mA<br>from 18 mA   | 30 x 45 x 20<br>85 x 50 x 30<br>90 x 75 x 30                                  | -<br>-<br>-                            | 80<br>85                 |
|   |  |   | XOC8<br>only<br>XSATHP                               | 13.8 V  | 5 mA (Max)  | 58 X 35 x 25  | -                                      | 25                       |
|   |  |   | PW3 only<br>XSATHP                                   | 220 V~13.8 Vdc~ 3.4A  | 1.3A/115V~ 0.8A/230V~   | -   | Up to 17 Ah                            | -                        |
|   |  |   | PW5 only<br>XSATHP                                   | 220 V~13.8 Vdc~ 5.1 A   | 2A/115V~ 1.2A/230V~   | -   | Up to 17 Ah                            | -                        |
|   |  |   | AMPLIBUS   | 13.8 V  | 30 mA   | 81 x 53 x 24  | -                                      | -                        |
| <b>WS ACCESSORIES</b>   | N° 32                                  |   | RPT WS 4   | 220 V~13.8 Vdc- 0,4A  | 36 mA   | 225 x 211x 75   | Up to 1,2 Ah                           | 1200                     |
| <b>COMMUNICATION<br/>INTERFACE</b>  | N° 1<br>N° 1                           |   | EWEB Plus<br>EWEB WIFI                               | -<br>-  | -<br>-  | -<br>-  | -<br>-                                 | -<br>-                   |
| <b>HOUSINGS</b>   |  |   | CONTSX<br>CONT SAT W<br>CONT XTREAM<br>CONT XTREAM-S | -<br>-<br>-<br>-  | -<br>-<br>-<br>-  | 154 x 110 x 36<br>225 x 211 x 75<br>330 x 420 x 107<br>321 x 279 x 83         | -<br>-<br>Up to 17 Ah<br>Up to 7 Ah    | 560                      |





## The flexible control panel



### PROFESSIONAL PRODUCT

Professional product, developed according to the most recent regulations with high quality materials. The multiple features permit to satisfy the needs of all the customers.



### LOW MAINTENANCE

The use of high technology allows you to get the max performance with the lowest consumption of energy, with a greater lifetime of batteries and less maintenance to the system.



### SAFE PRODUCT

Professional product that fits to any type of installation, from the apartment to the villa, from the office to the industrial site. It offers different possibilities of configuration, maintaining a high standard of safety.



### EASY TO INSTALL

Simple and intuitive system. A simple screwdriver or an electrical one are the only tools necessary to make a perfect installation



### AVS ELECTRONICS S.p.A.

Via Valsugana, 63 - 35010 - Curtarolo, (PD), Italy

Tel. +39 049 9698 411 - Fax +39 049 9698 407

avs@avselectronics.it - [www.avselectronics.com](http://www.avselectronics.com)